



# IME

ImaginNation Media Entertainment

#### CONFIDENTIALITY / NON-DISCLOSURE

The contents of this Project Packet are not to be construed as legal, tax or investment advice. Investors should conduct due diligence about IME Global Inc. d/b/a ImaginNation Media Entertainment, hereinafter IME, and its business and operations. This Project Packet is highly confidential, and the contents may not be reproduced, distributed or divulged in whole or in part without the prior written consent of IME. By accepting delivery of this Project Packet, you agree to hold it upon the foregoing terms and hold its content confidential. Any information contained in this Project Packet may be suspended in whole or in part by supplements or by an offering document. IME makes no representation or warranty, expressed or implied, as to the accuracy or completeness of the information in the enclosed documents. Financial projections herein are for illustrative purposes only. Boss Review Project Treatment and business proposal, with investment opportunity, available upon request.

## BOSS REVIEW

Genre: Talk Show / Scripted Reality / Sports / Comedy

Runtime: 25 minutes.

Intended Episodes: 13

Targeted Audience: Millennials and Generation X & Z

Created and written by Kevin K. Greene

Production Company: ImaginNation Media Entertainment

All rights reserved: IME Global Inc.



AN ORIGINAL TV SHOW

WGA Reg. 1576744



## TAGLINE

*A Different Kind of Sports Show — It's the next new sh\*t!*

A famous comedian hires an inexperienced film crew, crowns herself boss, producer and hostess of a sports TV show; all as play to invade the man caves of professional athletes.

## WISH-LIST

### HOSTESS



TIFFANY HADDISH



ILIZA SHLESINGER



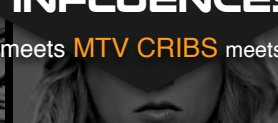
ERICA ASH



NATASHA LEGGERO

## INFLUENCES

REAL HUSBANDS OF HOLLYWOOD meets MTV CRIBS meets OPRAH WINFREY'S THE NEXT CHAPTER



The Scripted Comedy

The Setting

The Interview



Boss Review is a 25 minute sports show that has elements that seldom share the same screen; man-caves and home theaters, scripted reality and hilarious interviews that are meaningful and even intimate while exploring sides of professional athletes that are rarely seen by sports fans. It's scripted reality disguised as a sports show.

## SUMMARY

In our pilot episode our comedian finally reaches celebrity status and is invited to a dinner party at an NBA player's house, where she is blown away by his amazing man-cave. There, she comes up the worse possible idea; to risk her career by suddenly deeming herself 'producer of an online sports show'. This is all a ploy to experience pimped out man-caves across the globe. Her love for sports and tech toys takeover practical thinking and she hires a clumsy inexperienced all girl film crew to begin her relentless pursuit of famous athletes and their entertainment rooms. In the episodes that follow, our *'real production team'* will structure a *'real sports show'* around her antics. No acting will be required of athletes. They simply be themselves and do the interviews.

The cleverness of Boss Review, with the help of an ingenious comedian, will be its ability to capture effective and meaningful interviews in the midst of laughable chaos where everything that can go wrong does go wrong. Each episode will include a segment where our athlete screens his/her best and worse plays, during which time our comedian will make fun of it while seamlessly integrating legitimate questions that are sports worthy and smart. Meanwhile, our comical cast, portraying a film crew, will be all thumbs and at odds with each other, continuously interrupting with, *"my bad, boss, but..."* By pure luck or some freak of nature, an amazing interview will have somehow been achieved by the end every episode. By the end of season 1 our comedian and her fictitious sports show will become a huge success, causing beef with her investors; the setup for season 2.

### THE SETUP

#### Segment I — THE ENTRANCE

EXT. Comedian and crew enter athlete's property grounds in a sprinter. They arrive unannounced and spend time that at the door convincing athlete to do the interview.

#### Segment II — THE KITCHEN

INT. Comedian invades the frig and cabinets while being introduced to athlete's family. Meanwhile, the crew is setting up for the interview, giving a glance at the athlete's beautiful home.

#### Segment III — THE REPLAY

INT. The interview begins, which includes screened replays of the athlete's best and worse plays. Here comedy and meaningful questions are well balanced.

#### Segment IV — THE GAMES

INT. Interview segues into personal topics about family, goals, charities — ending with a social media trivia game that offers sponsored prizes to participating followers.

#### Segment V — THE EXIT

EXT. Comedian and/or crew challenges athlete at his/her own game before driving off in sprinter.

### KEVIN K. GREENE

CREATOR & EXECUTIVE PRODUCER

[Click below for credits and production company](#)



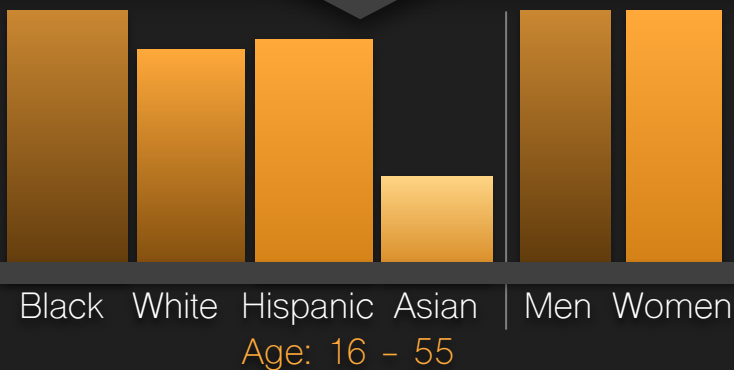
# GUEST WISH-LIST

Serena Williams - Rhonda Rousey - LeBron James - Tom Brady - Neymar  
 Michael Jordan - Lisa Leslie - Stephen Curry - Lauren Jackson - Simone Biles - Kawhi Leonard  
 Sue Bird - Maria Sharapova - Kobe Bryant - Conor McGregor - Jordan Spieth  
 Bryce Harper - Venus Williams - Champ Bailey - Lindsey Vonn - A.J. Green  
 Floyd Mayweather - Candace Parker - Odell Beckham Jr - Chris Sale  
 Nick Kyrgios - Kevin Durant - Mike Trout - Mike Tyson - John Wall - Laila Ali  
 James Harden - Danica Patrick - Jackie Joyner-Kersey - Jose Altuve  
 Jason Day - Anthony Davis - Derek Jeter - Josh Donaldson  
 Gabby Douglas - Magic Johnson - Sydney Leroux - Mikaela Shiffrin - Candace Hill - Carmelo Anthony - Allen Iverson  
 Holly Holm - Kevin Garnett - Mookie Betts - Dwayne Wade - Cristiane "Cyborg" Justino - Rose Namajunas

## INTENDED NETWORKS WITH TARGETED AUDIENCE



### TARGETED DEMO



### POTENTIAL FRANCHISE

Professional athletes are heroes. Icons who inspire and empower. The magic they possess crosses all cultural, religious, ethnic and even patriotic lines. This allows perfect opportunity to broadcast overseas or even establish a Boss Review franchise by simply casting the ideal comedians for Asian, European or South American versions of the show.

**ASIA      SO. AMERICA      U K**

Contact us  
for more information,  
screenplay, treatment etc.



**ImaginNation**  
MEDIA ENTERTAINMENT

IME Global Inc.  
917-727-5173  
[contact@imeglobalinc.co](mailto:contact@imeglobalinc.co)